



# Oulu Educational Offering

FINLAND



# CONTENTS

<b>OULU EDUCATIONAL PROGRAMMES .....</b>	<b>3</b>
<b>PROGRAMMES FOR EDUCATIONAL EXPERTS, TEACHERS, PRINCIPALS, DIRECTORS, ADMINISTRATIVE PEOPLE AND RESEARCHERS .....</b>	<b>4</b>
Oulu K12 Education Offering .....	5
Early Childhood Education and Care .....	6
Curriculum Work .....	7
Operational Culture in Schools .....	8
STEAM-based Learning.....	9
Multifunctional Community Centres.....	10
Entrepreneurship Education and Pedagogy .....	12
Sustainable Development Studies .....	14
Learning Environments .....	16
Inclusion and Special Needs Education.....	18
Professional Development and Leadership Programmes, Teacher Training .....	20
Expert Consultation on Finnish Educational Ethos: Vision and Mission .....	22

**Image sources:** City of Oulu, University of Oulu, Ministry of Education and Culture, VisitOulu, BusinessOulu/Marko Sulonen, Kuvia Suomesta image bank, Pauliina Aula-Kyrö, Petteri Löppönen, Design Inspis



**Publisher**  
Pino Network,  
University of Oulu

**Published**  
2020, updated 2022



# OULU EDUCATIONAL PROGRAMMES

Oulu region has a wide selection of high-quality products and services to offer to the educational world. We have many educational experts, teachers, principals, researchers, and leaders, who are willing to share their knowledge of the Finnish educational field with you!

Oulu's special strength in the area of educational knowledge is the wide cooperation between different educational organisations in the region. This makes it possible for us to offer comprehensive, tailor-made educational programmes that can include expert sections from early childhood education to primary, secondary, upper secondary, higher, and vocational education. Our programmes can include visits to Oulu's modern schools and other facilities and learning environments such as the Oulu University Fab Lab and Oulu City Library.

We also offer deeper professional development for teachers and leadership training for school management, and even consultation and local training at your own school or organisation. There are several ways to implement the Oulu Educational Programmes, ranging from actual visits and presentations in Oulu, and training and consultation at client's location to online training and consultation. Some programmes may contain self-study parts.

The educational organisations participating in these programmes are **City of Oulu** Educational and Cultural Services (early childhood education and care, primary, secondary and upper secondary education), **University of Oulu**, **Diaconia University of Applied Sciences**, **Educational Consortium OSAO (VET)**, **Luovi Vocational College** and **Oulu University of Applied Sciences**. There are other educational and training organisations in Oulu, and they also can offer educational programmes and training content.



# PROGRAMMES FOR EDUCATIONAL EXPERTS, TEACHERS, PRINCIPALS, DIRECTORS, ADMINISTRATIVE PEOPLE AND RESEARCHERS

---



# Oulu K12 Education Offering

The Finnish Education System has raised a lot of interest internationally and is at the top of global rankings. The Finnish approach and methods are unique. We have extensive and very detailed knowledge of Finnish education and willingness to localise it all over the world.

Together with you, we can create a world-class K12 school with our provision of expertise:

- Finnish educational ethos: vision and mission
- Management, quality assurance and managing change
- Professional development and leadership
- Finnish international curricula



- Versatile learning environments, digitalization
- Pedagogical choices, working methods, competence-based learning and assessment
- Individual learning paths, inclusion and special needs education
- Extracurricular activities

## CONTACT FOR MORE INFORMATION:

Ms. Anne Viherkari,  
email [global.education@oulu.fi](mailto:global.education@oulu.fi),  
mob. +358 40 674 4241 or

Ms. Kristiina Kangas,  
email [kristiina.kangas@ouka.fi](mailto:kristiina.kangas@ouka.fi),  
mob +358 40 159 6210

Oulu K12 education offering is jointly provided by Educational Services of City of Oulu, University of Oulu, Oulu University of Applied Sciences, Diaconia University of Applied Sciences, and Educational Consortium OSAO (VET).

# Early Childhood Education and Care

**Would you like to learn how early childhood education and care is organised in Finland, and how early childhood education and care is part of the Finnish education system? The Early Childhood Education and Care Training Programmes offer insight into the Finnish early childhood education model and give you a chance to have discussions on how it supports the child's balanced growth, development, and learning.**

Finnish early childhood education and care (ECEC) supports the child's balanced growth, development, and learning. Each child is seen as an active and competent agent and is valued as one. Our main goal is a *healthy, happy child* who thrives and experiences the *joy of learning* every day. Pedagogy and practice in Finnish early childhood education and care consists of physical activity, playing, artistic experiences, self-expression, and exploration.

Oulu's local curricula for ECEC delivers a comprehensive learning path for each child. Each child's personal early childhood education plan is in the central role.

An *Early Childhood Education and Care Training Programme* could include topics such as:

- Day 1: Introduction to Early Childhood Education and Care in Finland

- Day 2: Pedagogy in Early Childhood Education
- Day 3: Transversal Competencies
- Day 4: Learning Environments, Playful Learning
- Day 5: Applying Edu-Care Model in the Home Country

**Programme length:** 1–5 days.

## CONTACT FOR MORE INFORMATION:

Ms. Kristiina Kangas,  
email [kristiina.kangas@ouka.fi](mailto:kristiina.kangas@ouka.fi),  
mob +358 40 159 6210

The Early Childhood Education & Care Programme is jointly organised by Educational Services of City of Oulu, University of Oulu, Diaconia University of Applied Sciences, and Educational Consortium OSAO (VET).



# Curriculum Work

**Oulu's schools have many exciting working methods within their local curriculum! Why not come over and learn what expertise we can offer to teachers around the world? How do students in Oulu learn 21st century skills in their daily school life?**

Oulu City's primary and secondary schools have six different curriculum paths; these are paths of *wellbeing, sustainability, culture, global citizenship, information management, and entrepreneurship*. These paths guide towards activities that combine different school subjects, make students engage in activities, offer new experiences, and utilise cooperation and local opportunities.

Oulu City's Educational and Cultural Services also have a strong background in the implementation of new curricula, which helps schools truly take a new curriculum into use in schools abroad. Through this work, new schools and existing schools can start using a Finnish-style curriculum in their daily schoolwork.

The Finnish Core Curriculum for Early Education and Care and the Finnish Core Curriculum for Primary and Secondary education can be modified for international use. The modified Finnish Core Curricula for international use must be blended with the particular country's requirements. We have expertise in this and can do this in collaboration with you!

We can also offer Finnish-type additions in a School Curriculum according to the needs of the education provider. We can also design and carry out the implementation process

for a school-level curriculum. As a result, the local staff gains an ownership of the curriculum in their own learning community. The themes in the implementation process can be e.g. pedagogical choices, integrative instruction, varied pupil assessment during their studies, and support for learning and collaboration between school and homes.

Children's and young people's wellbeing affect their ability to engage with their education. The Diaconia University of Applied Sciences can offer specialist content on the Finnish social and health care system, interpretation (for the hearing impaired and different languages), and multi-religion/multi-cultural education within the programme.

**Programme length:** 1–10 days. We also offer long-term curriculum work consultation and implementation, which can last up to a year or several years.

## CONTACT FOR MORE INFORMATION:

Ms. Kristiina Kangas,  
email [kristiina.kangas@ouka.fi](mailto:kristiina.kangas@ouka.fi),  
mob +358 40 159 6210

The Curriculum Work Programme is jointly organised by Educational Services of City of Oulu, University of Oulu, and Diaconia University of Applied Sciences.

# Operational Culture in Schools

**Oulu does not only showcase new school buildings but also well-functioning operational culture to complete the modern Finnish school life.**

During this programme, you will learn about the pedagogical expertise teachers, other educational personnel and management have in Oulu, and what is needed from the physical school environment, psychological factors and social relationships of the school community.

When we are talking about teaching future skills to the students, schools should also reflect these skills in their daily work. Future skills should be seen within the daily functioning of the school, for example, in how schools are run, how cooperation between teachers works, and how pupils can use these skills in daily school life.

We can offer tools and capability development programmes on

- theories and principles for a collaborative school
- collaborative learning in the school's curriculum and annual planning
- how to organize the management system of a collaborative school
- what is required from the management, the learning environment, and the school staff
- how to evaluate and develop the operational system at a school.

An example of a comprehensive programme (can be modified to a shorter programme according to the needs and wishes of the customer):

## **Module 1 for the school's management**

A 3-day collaborative training entity for the same participants (6 h/day).

## **Module 2 for the school staff (including head teachers, teachers, and other members of the staff)**

Altogether 10 days of training in two parts (6 h/day).

## **Module 3: Consultancy and support during the first year after the training modules**

Consultancy and support 2 x 3 days during the school year.

Evaluation session twice a year supervised by the trainers.

**Programme length:** The Operational Culture in Schools programme can be organised as a 1–5-day programme in Oulu or with a more comprehensive approach (see the example above), at your own school abroad and/or online.

## **CONTACT FOR MORE INFORMATION:**

Ms. Kristiina Kangas,  
email [kristiina.kangas@ouka.fi](mailto:kristiina.kangas@ouka.fi),  
mob +358 40 159 6210

The Operational Work in Schools Programme is jointly organised by Educational Services of City of Oulu, University of Oulu, Diaconia University of Applied Sciences, and Educational Consortium OSAO (VET).



# STEAM-based Learning

**Oulu is known for its innovative, high-tech companies; hence it is only natural to introduce STEAM education here.**

STEAM subjects (Sciences, Technology, Arts and Engineering/manual skills, and Mathematics) are designed to teach students self-determination, interaction competence, and critical thinking. The aim is to help students to grow into resilient, responsible, cooperative, and brave problem-solvers.

The STEAM-based learning path, which was developed in Oulu for basic education, has four parts: craft and building, exploring and innovation, coding and programming, and digital manufacturing. Oulu has also been the first province in Finland to have a Fab Lab in a comprehensive school.

A half-day example programme at a primary/secondary school:

## **Introduction to the STEAM-based education with case examples (for teachers, principals and educational professionals, and companies):**

- School's ideology presented by the school principal and vice principal.
- Students introduce the visitors to STEAM-based education with case examples.
- Workshop in which the participants can create their own products/projects.
- Length: 3 hours.

There are several similar 3-hour visits with a different content for STEAM education at

schools in Oulu. They can be combined into a more comprehensive visiting programme or the teaching staff can also offer training in other ways on the subject.

The STEAM-based Development Programme also covers research done on STEAM at the University of Oulu, introduction to how Fab Labs (at the university and at schools) are used, what STEAM-based pedagogy means, and how it is implemented in daily educational work. In Oulu, STEAM is part of the transversal competence learning.

Educational Consortium OSAO (VET), in turn, applies STEAM-based learning in vocational education through multidisciplinary project-based learning.

**Programme length:** typically, 3–6 hours/ theme. Longer programmes available: visits to a Fab Lab or some innovative companies in Oulu can be added to create an even more comprehensive programme. Presentations and workshops by STEAM experts are also available on request both in Oulu and abroad, or online.

## **CONTACT FOR MORE INFORMATION:**

Ms. Anne Viherkari,  
email [global.education@oulu.fi](mailto:global.education@oulu.fi),  
mob. +358 40 674 4241

STEAM-based Learning Programme is jointly organised by Educational Services of City of Oulu, the University of Oulu and Educational Consortium OSAO (VET).

# Multifunctional Community Centres

**A good example of the modern, multifunctional buildings in Oulu is Kastelli Community Centre. The starting point for the design and construction of Kastelli was clear: the city needed a safe and versatile facility that has a long life-cycle and serves the needs of residents of all ages, now and in the future. Multifunctional community centres are usually created and run through a public-private partnership model (PPP).**

As most of the building is used for educational purposes, the spatial design was created based on pedagogical expertise. The idea was that the building offers diverse opportunities for activities, stimuli, and possibilities for studying both alone and in groups using diverse equipment. A good learning environment is flexible and adaptable, but also pleases the eye and creates a sense of security.

The Multifunctional Community Centres Programme covers themes such as:

- New structures and methods to help children have more harmonised days at school and increase their wellbeing and how management supports it.
- How multifunctional community centres offer inspiring growth and learning paths, which take individual needs of children and adults into consideration.
- How the shared use of the building and networking help develop activities in the building and improve cost-efficiency.

Multifunctional community centres host multi-professional teams, which can include staff from e. g. schools, an early education centre, youth services, a library, community colleges, cultural service, sports services, and health services.

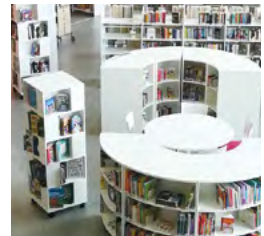
**Programme length:** 3–6 hours (a visiting programme in Oulu and/or a presentation online)

Presentations from architectural agencies and construction companies can be added to create an extended programme.

## CONTACT FOR MORE INFORMATION:

Ms. Kristiina Kangas,  
email [kristiina.kangas@ouka.fi](mailto:kristiina.kangas@ouka.fi),  
mob +358 40 159 6210

The Multifunctional Community Centres Programme is organised by Educational Services of City of Oulu, University of Oulu, and Diaconia University of Applied Sciences.



KASTEELI COMMUNITY CENTRE



# Entrepreneurship Education and Pedagogy

**Oulu is full of special entrepreneurial spirit! Would you like to know how it is taught to students?**

Oulu offers Arctic entrepreneurship education expertise! Oulu has been known as a high technology town for a long time already. First, thanks to its successful telecoms and ICT companies and nowadays also for, medical and wellbeing/health technology, IoT (Internet of Things), and gaming companies.

The early childhood education, primary and secondary school education follows a unique entrepreneurship curriculum path in Oulu with an aim to teach students a variety of skills from team working and societal skills to innovativeness and understanding one's strengths. Vocational schools and universities also have wide entrepreneurship course offerings for their students. All levels of education have strong connections to the business world in the area. University of Oulu also offers 1–2-week long entrepreneurship-themed summer and winter schools for upper secondary school and university students.

At Oulu University of Applied Sciences, you can learn about the innovation ecosystems

available in the Oulu region and pedagogical methods which are used to support growth and new businesses.

The Entrepreneurship Pedagogy Programme offers a deeper introduction to entrepreneurship pedagogy from childhood education all the way through primary, secondary up to upper secondary, vocational, and higher education. You can see how students, from early on, learn to identify their own strengths, work in teams, take responsibility, adopt an innovative attitude, and can learn to apply the entrepreneurial mindset in everyday life – and later on, in work life.

The programme can also include visits to schools to see how entrepreneurship pedagogy is implemented, and meetings with interesting local companies.



An example programme on *Entrepreneurship education*:

DAY 1	DAY 2	DAY 3	DAY 4	DAY 5
<p><b>Opening session:</b> Presentation of the training programme, “There is something in everyone”: presentation of the North Ostrobothnia Entrepreneurship Education Strategy.</p>	<p><b>City of Oulu, Educational and Cultural Services: Methodologies in early education and care, basic education, and upper secondary education:</b> transversal skills/ entrepreneurship and working life skills.</p>	<p><b>Educational Consortium OSAO (VET) Methodologies in vocational education:</b> Project-based learning, Collaboration with working life, and Learning environments.</p>	<p><b>Oulu University of Applied Sciences: Methodologies in higher education</b> Avanto Entrepreneurship program/tailored to support each student’s business idea towards profitable businesses.</p>	<p><b>University of Oulu: Methodologies in higher education</b> Entrepreneurship for sustainability, University Innovation Centre.</p>
Lunch	Lunch	Lunch	Lunch	Lunch
<p><b>Visit to Business Asema.</b> It is a meeting place open to everyone who are interested in entrepreneurship, learning new skills, and finding employment.</p>	<p><b>Visit to a school specialised in entrepreneurship education</b> (primary, secondary, or upper secondary).</p>	<p><b>Visit to an OSAO unit:</b> Different learning environments e.g. school restaurant, school’s shop, houses under constructions, car repair, hairdressers, beauty salon.</p>	<p><b>Oulu University of Applied Sciences: Methodologies in higher education</b> Terwa Academy studies entail working as a team entrepreneur, aiming knowledge required for creating a business, and readiness for entrepreneurship.</p>	<p><b>Visit to Tellus Innovation Arena</b> Final session with feedback and certificates.</p>

Entrepreneurship education in Oulu is based on the North Ostrobothnia Entrepreneurship Education Strategy according to which the youth are the key to the future. The focus is on strengthening students’ entrepreneurial and working life skills, developing, and using learning environments and various methods for entrepreneurship, and building entrepreneurial culture.

**Programme length:** 1/2–5 days (a visiting programme in Oulu and/or presentations online or training sessions abroad).

**CONTACT FOR MORE INFORMATION:**

Ms. Anne Viherkari,  
 email [global.education@oulu.fi](mailto:global.education@oulu.fi),  
 mob. +358 40 674 4241

Entrepreneurship Pedagogy Programme is jointly organised by the University of Oulu, Educational Services of City of Oulu, Oulu University of Applied Sciences, and Educational Consortium OSAO (VET).

# Sustainable Development Studies

**Adopting a sustainable lifestyle is crucial for the survival of humanity and the environment. Educating people about sustainability is important when we want to change people's behaviour, wherever we live in the world. Do you want to learn how to make sustainable development studies more meaningful?**

In Oulu, the aim for sustainable development teaching in schools is to create eco-socially aware citizens, who understand what effects their actions have on other people, the environment, and the society as a whole, and who also act according to this knowledge.

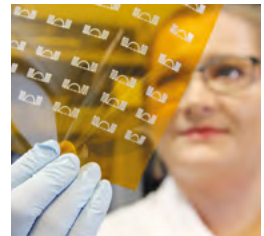
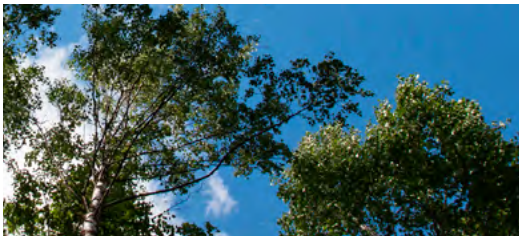
Schools in Oulu offer sustainable development themed studies every school year from early education all the way up to the university level. The teaching includes ready-made material packs, nature school programmes, activities with cooperation partners, and online learning environments.

Some Oulu-area schools and early education centres have eco-certifications, such as the Vihreä Lippu ("Green Flag") which is a sustainable development programme for early education centres, schools, and youth organisations. Vihreä Lippu is part of the international Eco-Schools programme by FEE (Foundation for Environmental Education).

Sustainable development education is one of the local curriculum paths for basic education

in Oulu. The curriculum path ideology stresses the student's own role in learning and building his or her knowledge. Learning happens as a result of the student's own actions, which take place in cooperation and interaction with other students, teachers and other adults, and learnings environments. The sustainable development path also teaches students to respect one's own culture and language as well as those of other people, and to take responsibility of the wellbeing of others. Being part of the curriculum, the learning experiences, starting from early childhood, progress as a learning path towards a more sustainable lifestyle.

There is an option to add specialist presentations from the University of Oulu on, for instance, Industrial Management and Engineering, Science, or Economics. Sustainable development is in the focus of many fields of research and study.



## An example programme on *Education for Sustainable Development*

	DAY 1	DAY 2	DAY 3
9:00–12:00	<p><b>Visit to Alakööki: City of Oulu's development unit for sustainable development and cultural education in early education:</b> Activities for early education units for sustainable development education, and Green Flag promotion. Alakööki's activities are based on City of Oulu's environmental programme and early education and preschool plans.</p>	<p><b>Visit to Nature school of Oulu</b> (Timosenkosken luontokoulu): The concept of the school and example programmes.</p>	<p><b>Visit to University of Oulu:</b> Sustainable development in the Finnish teacher training.</p>
12:00–13:00	Lunch at school	Packed lunch at Nature school	Lunch
13:00–15:00	<p><b>Presentations/visit to a school:</b> Agenda 2030, sustainable development curriculum path and educational projects in Oulu, the "Green Flag" certification. Actions taken at schools: introduction of example cases at a school (primary/secondary/upper secondary).</p>	<p><b>OSAO: Sustainable workshops in the phenomenal learning environments:</b> Workshop in different learning environments like school restaurant, houses under constructions, car repair, jewellery, using recycled materials and having a connection to the Nordic nature.</p>	<p><b>OSAO Virpiniemi Sports Institute:</b> Wilderness track walking by orienteering. Team-building activities related to wilderness skills and sustainable development.</p>

### Programme length: 1/2–5 days.

Tour organisers can add additional outdoor activities or company visits to interesting local sustainable development-oriented companies to the programme.

### CONTACT FOR MORE INFORMATION:

Ms. Kristiina Kangas,  
email [kristiina.kangas@ouka.fi](mailto:kristiina.kangas@ouka.fi),  
mob +358 40 159 6210 or

Ms. Anne Viherkari,  
email [global.education@oulu.fi](mailto:global.education@oulu.fi),  
mob. +358 40 674 4241

The Sustainable Development Programme is jointly organised by the University of Oulu, Educational Services of City of Oulu, and Educational Consortium OSAO (VET).

# Learning Environments

**The Finnish National Core Curriculum is based on a conception of learning that sees students as active participants. Learning takes place in interaction with other students, the teachers and other adults, and in various communities and learning environments. It involves doing things alone and together, thinking, planning, and exploring, and assessing these processes in versatile manners.**

Learning environments refer to the facilities, locations, communities, and operating practices where learning and studying take place. The learning environment also includes the tools, services and materials used for studying. Learning environments must support the growth, learning and interaction of the individual and the community. Well-functioning learning environments promote interaction, participation, and communal building of knowledge. They also enable active cooperation with communities or experts outside the school.

In the development, planning, implementation and use of facility solutions for basic education, factors to be accounted

for include ergonomics, ecological qualities, aesthetics, accessibility and acoustic conditions, as well as the lighting, indoor air quality, comfort, order and tidiness of the premises. The facility solutions of the school, including the furniture and equipment, can be used to support the pedagogical development of instruction and active participation of pupils.

An effort is made to give the pupils access to the facilities, tools, and materials as well as library services so that they can also provide opportunities for independent study. Not only the indoor and outdoor facilities of the school but also nature and the environment of the buildings are utilised in the teaching





of various subjects. Libraries, sports, art and environmental centres, museums and many other facilities offer diverse learning environments.

Information and communication technology (ICT) are a key part of versatile learning environments. It can help to reinforce the pupils' participation and skills in teamwork and support their personal learning paths. The diverse media culture is taken into consideration in the development of learning environments. Educational organisations in the Oulu region also use simulations as learning environments (for example, in logistics, forestry, social and health care, and in other technical fields of education of VET). New ICT solutions are introduced to promote and support learning. The pupils' and students' own ICT devices may be used to support learning.

Feelings of success and positive experiences gathered in various environments and learning situations inspire pupils to develop their personal competence. The pupils take part in developing learning environments. The pupils'

individual needs are taken into an account in the planning of learning environments.

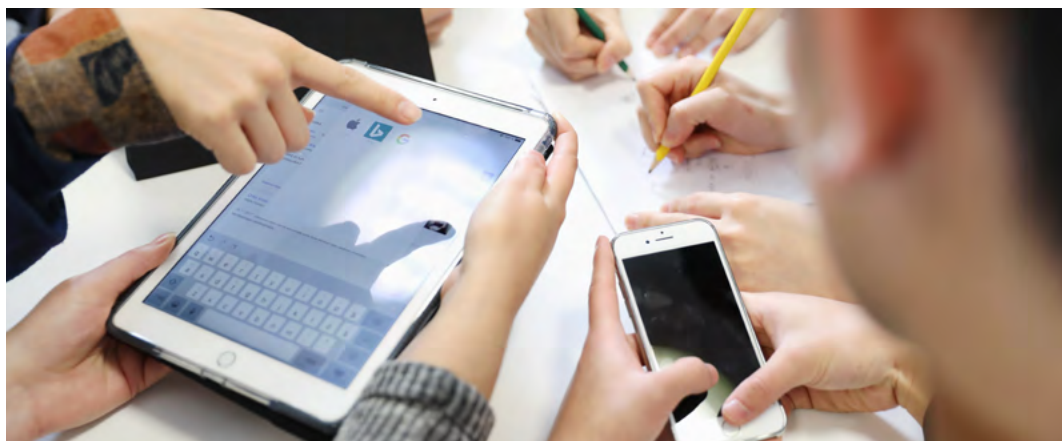
Oulu offers interesting opportunities to learn about many online learning environments and about blended learning solutions on all levels of education. Also, the Faculty of Education at the University of Oulu specialises in digitally enhanced learning. The Diaconia University of Applied Sciences is known for blended learning, which strongly utilises online learning environments. Educational Consortium OSAO (VET) in Oulu also has over 3,000 working life partners, which enables learning on the workplaces as part of vocational studies.

**Programme length:** 1/2–3 days.

#### CONTACT FOR MORE INFORMATION:

Ms. Anne Viherkari,  
email [global.education@oulu.fi](mailto:global.education@oulu.fi),  
mob. +358 40 674 4241

Learning Environments Programme is jointly organised by Educational Services of City of Oulu and University of Oulu, Diaconia University of Applied Sciences, and Educational Consortium OSAO (VET).



# Inclusion and Special Needs Education

**The development of basic education in Finland is guided by the inclusion principle. The accessibility of education must be ensured for all children. Each school providing basic education has an educational task, which means supporting the pupils' learning, development, and wellbeing in cooperation with the home.**

The organisation of instruction and support is based on the strengths as well as the learning and developmental needs of each pupil and teaching group. Attention shall be paid to the accessibility of learning, and the prevention and early recognition of learning difficulties. Support for learning and school attendance comprises communal and learning environment related solutions and meeting the pupils' individual needs. When planning instruction, it must be taken into account that the need for support may vary from temporary to continuous or from minor to stronger, and that the pupil may need one or several forms of support.

The purpose of support is to prevent diversified and more serious problems as well as their long-term effects. It must be ensured that the pupil has opportunities to gain experiences of success in learning and as a group member, and his or her positive self-image and attitude towards schoolwork must be supported. Pedagogical expertise and cross-sectoral cooperation between teachers

and other professionals providing support is important in identifying and assessing the need for support and planning and implementing support measures.

Primarily, support is provided for a pupil in his or her own teaching group and school by means of various flexible arrangements, unless the pupil's best interests necessitate his or her transfer to another teaching group or school in order to provide support. All in all, schools offer support for learning, inclusion, special needs education, and counselling.

The Faculty of Education at the University of Oulu has done a lot of research on special needs education. Special needs education is one separate study path at the university. The Diaconia University of Applied Sciences specialises on teaching special needs interpretation, for example, for people with hearing difficulties. Luovi Vocational College offers expertise in special needs vocational education and training.



An example programme on *Special needs education and the Finnish inclusive education model*:

	DAY 1	DAY 2	DAY 3	DAY 4	DAY 5
9:00–11:30	<b>Introduction of the course Finnish education system:</b> Values and structure and Developing a good learning environment	<b>Recognizing different learning &amp; teaching styles</b>	<b>Supporting the academic/ social/physical wellbeing of all students:</b> Methods for teacher leadership in an inclusive classroom	<b>Identifying students with special educational needs</b>	<b>Support systems and individual learning paths</b> for different learners as in the Finnish school context
11:30–12:30	Lunch	Lunch	Lunch	Lunch	Lunch
12:30–16:00	<b>Inclusive Education:</b> The philosophical and ideological background for special needs education and inclusive education	<b>Differentiation in teaching and learning</b>	<b>Psychological wellbeing of all students</b>	<b>Strategies for teaching students with special needs</b>	<b>Assessment of students with special educational needs</b> Conclusions of the training

**Programme length:** 1/2–5 days.

#### CONTACT FOR MORE INFORMATION:

Ms. Anne Viherkari,  
 email [global.education@oulu.fi](mailto:global.education@oulu.fi),  
 mob. +358 40 674 4241 or

Ms. Mari Kontturi,  
 email [mari.kontturi@luovi.fi](mailto:mari.kontturi@luovi.fi),  
 mob. +358 40 319 3264

Learning Environments Programme is jointly organised by Educational Services of City of Oulu, University of Oulu, Diaconia University of Applied Sciences and Luovi Vocational College.



# Professional Development and Leadership Programmes, Teacher Training

**Our comprehensive training programmes help you take your skills onto a new level! During the training you will get a fresh, new perspective and learn to use new tools for your daily work. Our training programmes are tailor-made to suit your organisation's specific needs.**

Our teaching and leadership programmes can either be tailored to give you an overall training in handling topics such as the Finnish education system and its specific features, transversal skills, innovative learning environments and materials, ICT skills, international skills, entrepreneurship pedagogy, and school management. Or the training programme can be tailored to cover some specific needs your organisation has.

The Professional Development and Leadership Programmes available in Oulu are not limited to primary and secondary school context but can also handle early, university, and vocational school education. They are suitable for students, teachers, principals, managers, researchers, teacher trainers, and other educators.

Here is an example list of topics and themes on which training is offered:

## UNIVERSITY OF OULU AND OULU UNIVERSITY TEACHER TRAINING SCHOOL

- Degree Programme in Intercultural Teacher Education (BA + MA)
- Master's Degree Programme in Education and Globalisation
- Master's Degree Programme in Learning, Education and Technology
- In-service training courses in latest education research areas
- Online in-service training courses
- Onsite in-service training courses in Finland or in your home country



- International conferences in Oulu, Finland
- Job shadowing
- Study visits

### **OULU UNIVERSITY OF APPLIED SCIENCES**

- Introduction to Professional Teacher Training (vocational teacher education)
- Teacher Training and Leadership (vocational teacher education)

### **DIACONIA UNIVERSITY OF APPLIED SCIENCES**

- Training for professional work-related supervision, Coaching management in educational institutions, Multicultural teaching and guidance
- Tailored short-term courses: Social and health sector guidance skills, International and multicultural working environments, Organisational Ethics, Confirmation work, Injection training, Pharmacological treatment

### **EDUCATIONAL CONSORTIUM OSAO (VET)**

- Tailored visits/short-term courses e.g. on the following subjects:
  - Overview to operational culture and school management of multidisciplinary vocational college.

- Particular features of Finnish vocational education in practise: learning environments, competence-based assessment, working life collaboration, individual study paths.

- Job shadowing

### **EDUCATIONAL SERVICES OF CITY OF OULU**

- Tailored short- and/or long-term courses, workshops: teacher training on pedagogical choices (e.g. competence-based learning).
- Tailored short- and/or long-term courses, workshops: enhancing digital integration in learning and teaching, planning a Technology Enhanced Roadmap for the school

### **LUOVI VOCATIONAL COLLEGE, SPECIAL NEEDS VET**

- Study visits
- In service training on vocational special needs education, such as recognizing special needs, building learning paths and supporting learning at work places
- Job shadowing
- Consultancy

### **CONTACT FOR MORE INFORMATION:**

Ms. Anne Viherkari,  
email [global.education@oulu.fi](mailto:global.education@oulu.fi),  
mob. +358 40 674 4241



# Expert Consultation on Finnish Educational Ethos: Vision and Mission

Education is one of the Finnish cornerstones and it is a fundamental right of all citizen. The main goal of Finnish education systems is to offer all citizens equal opportunities to educate themselves.

Oulu-area educational organisations also offer consultation related to the Finnish education systems and knowledge and can offer you answers to your specific questions.

In Finland, students who have completed basic education choose their upper secondary pathway, either general or VET (vocational education and training). Both pathways are equal in value and provide access to studies at the university level.

**From early education up to upper secondary education and higher education, expert consultation is offered on the themes as follows:**

- Finnish international curriculum
- Collaborative teaching and learning
- Digitality and ICT in education
- Sustainable early education centres and schools
- Entrepreneurship pedagogy
- Global citizenship

**For vocational education, consultation is offered on themes such as:**

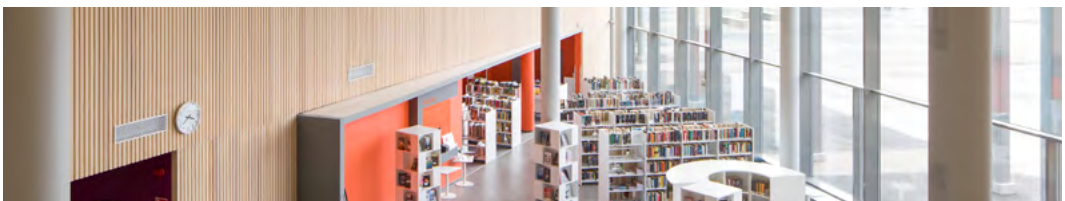
- Operational culture in providing vocational education in various fields
- Working life collaboration
- Learning environments in vocational education
- Vocational teaching and learning methods e.g. competence based training and digital learning
- Teaching working life skills
- Entrepreneurship pedagogy
- Continuous learning

**CONTACT FOR MORE INFORMATION:**

Ms. Kristiina Kangas,  
email [kristiina.kangas@ouka.fi](mailto:kristiina.kangas@ouka.fi),  
mob +358 40 159 6210

Mr. Antti Rovamo,  
email [antti.rovamo@osaoedu.fi](mailto:antti.rovamo@osaoedu.fi),  
mob. +358 50 560 8392

Expert Consultation is offered by Educational Services of City of Oulu, the University of Oulu, Diaconia University of Applied Sciences, and Educational Consortium OSAO (VET).



# EDUCATION SYSTEM IN FINLAND

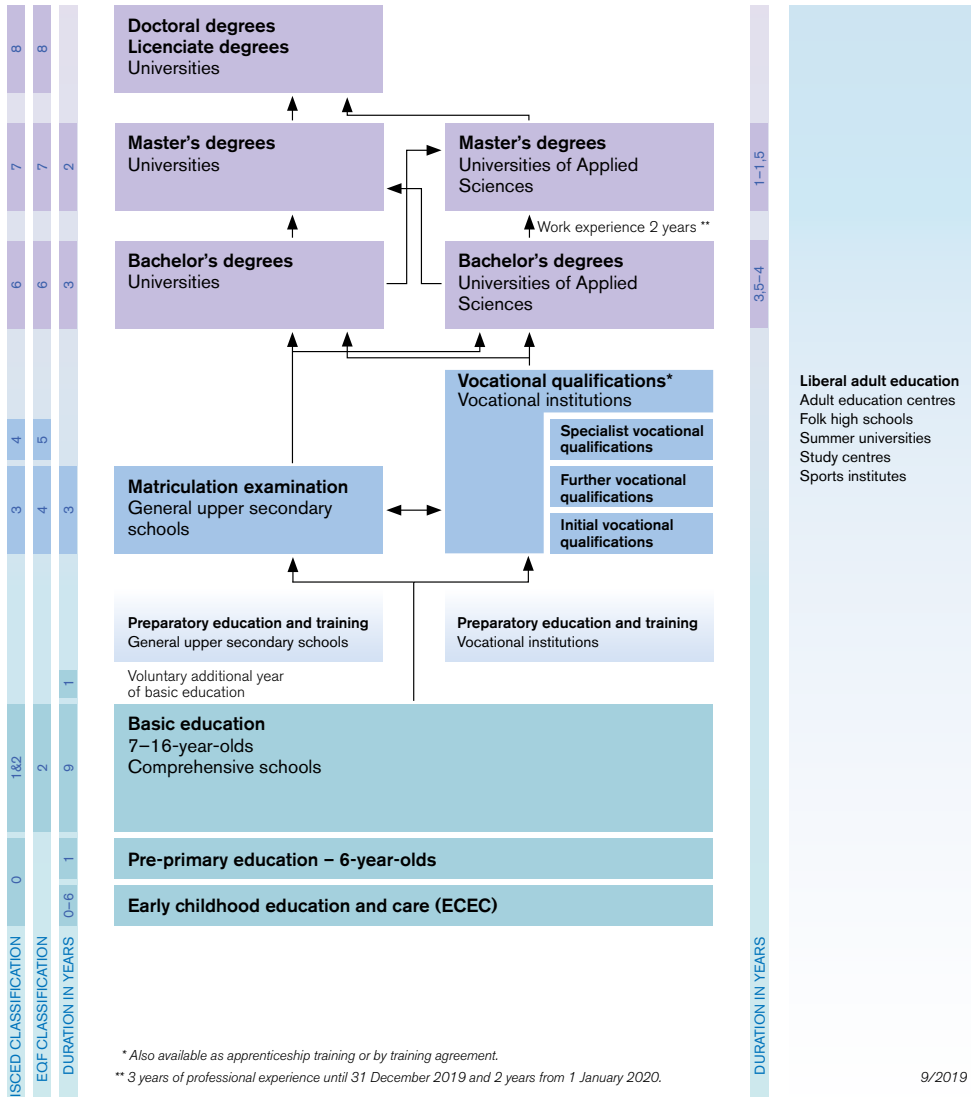


Image source: Ministry of Education and Culture, Finland.



Image source (map original): Marko Sulonen

# Oulu Educational Offering

---

FINLAND

**PINO**  **Network**

Exporting Northern Excellence

[www.pinonetwork.fi](http://www.pinonetwork.fi)